






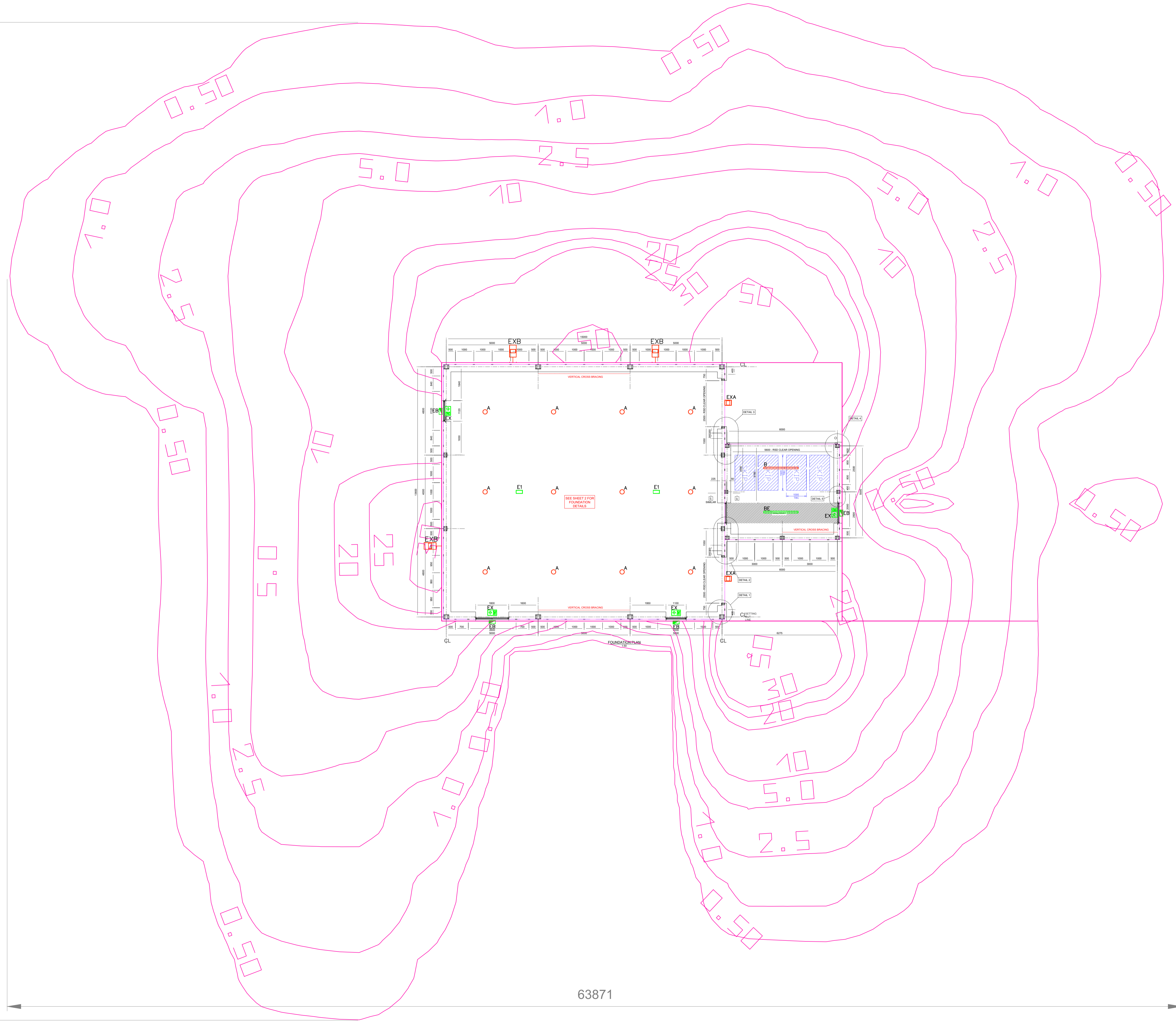


54239

63871

Lighting Legend

-  LED Multi Wattage Circular High Bay
Set to: 60W, 4000K
Suspended 0.5m from ceiling using
contractor own method (Gripple etc)
 -  LED Linear 6FT Twin IP65 Linear
 -  LED Emergency Exit Sign
 -  LED Emergency Bulkhead IP65
 -  LED High Output Emergency Bulk
Surface Mounted
 -  LED Asymmetric 100W Floodlight
 -  LED Street Light Mounted on
the wall at 5.5m using 300mm Long,
60mm Diameter Outreach Arm
- Shaded Green denotes key switch
emergency converted luminaire



P03	Added 3 x Thorn Street Lights and Light Spill	NP	NP	280324
P02	Changed to 300lx Scheme	NP	NP	290124
P01	Preliminary Comment	NP	NP	040124
Rev	Amendment	By	Chk	Date

Drawing Status
PRELIMINARY

Client
CCS Aircon
EC Newcastle East

Project
Wylfa Power
Warehouse Lighting

Description
Electrical Engineering Services
Proposed Lighting Layout

Electric Center
North East Regional Office
First Floor, 4320 Park Approach
Thorpe Park, Leeds
LS15 8GB
Tel: 07816 251442
Email: neil.postethwaite@electric-center.co.uk



Scale	Size	Drawing Number	Rev
1:100	A1	NP-0735-0441-P03	P03