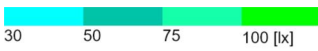
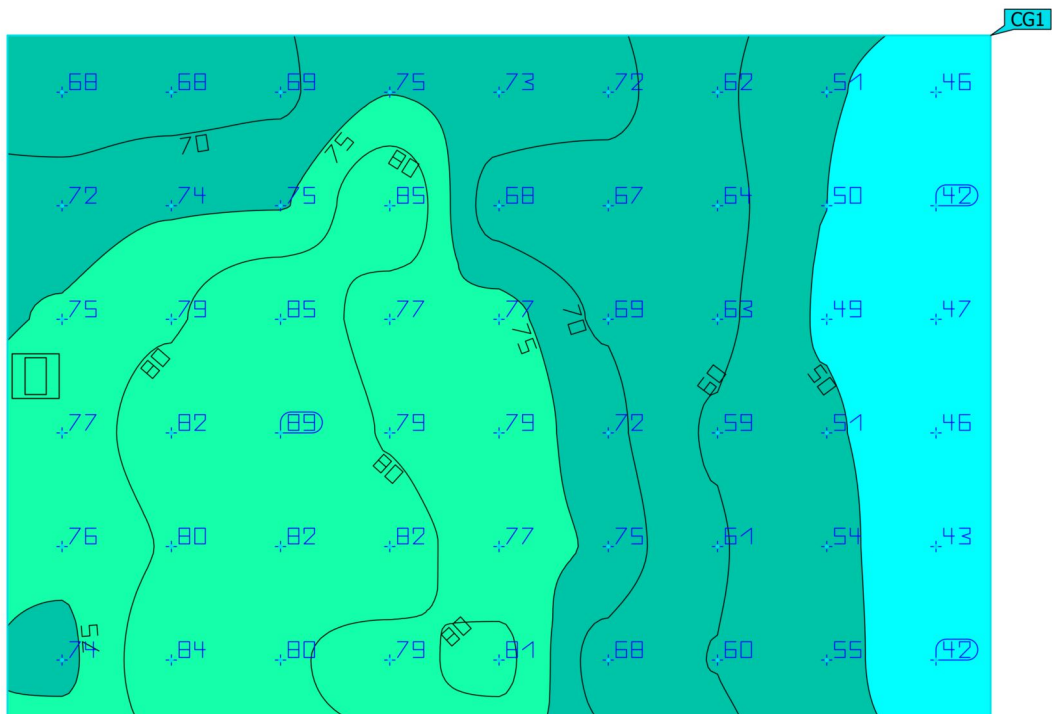
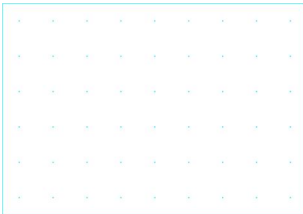


Wylfa Power

300lx Scheme

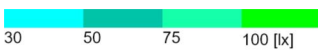
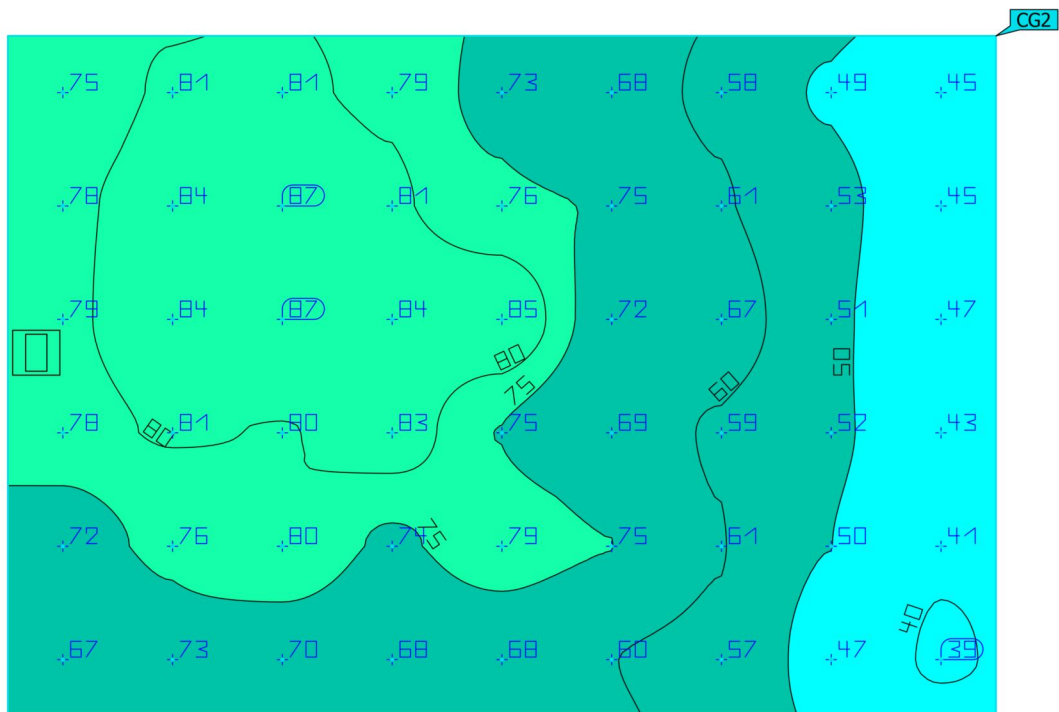
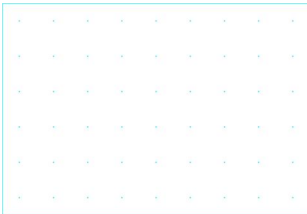
Site 1 (Light scene 1)
Roller Shutter



Properties	\bar{E}	E_{min}	E_{max}	$U_o (g_1)$	g_2	Index
Roller Shutter Perpendicular illuminance Height: 0.000 m	68.3 lx	42.0 lx	89.5 lx	0.61	0.47	CG1

Utilisation profile: DIALux presetting (5.1.4-Standard (outdoor transportation area))

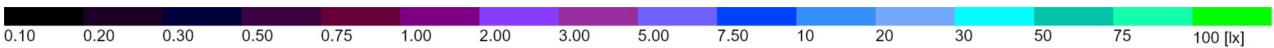
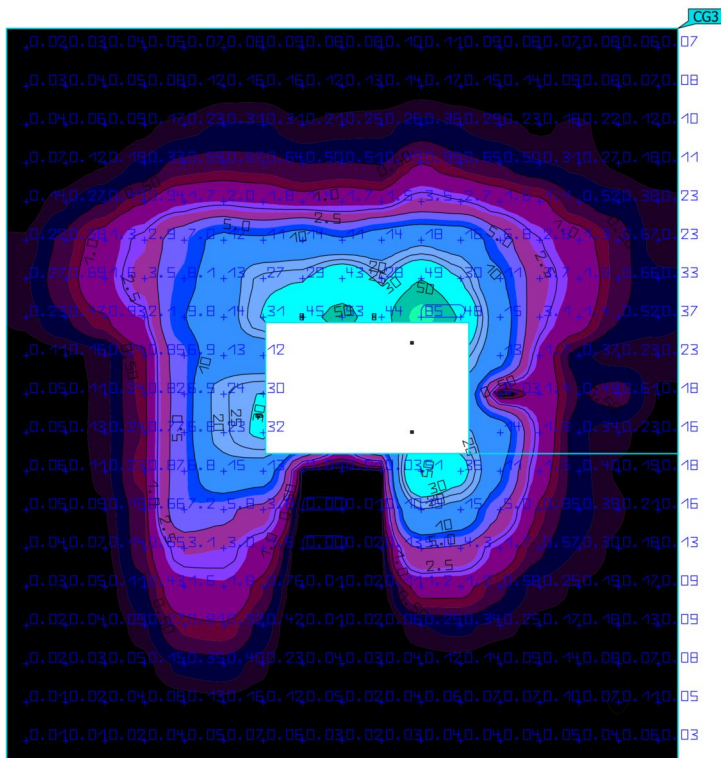
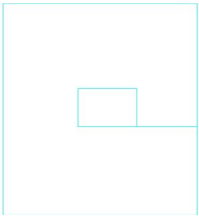
Site 1 (Light scene 1)
Roller Shutter



Properties	\bar{E}	E_{min}	E_{max}	$U_o (g_1)$	g_2	Index
Roller Shutter Perpendicular illuminance Height: 0.000 m	68.2 lx	39.3 lx	87.3 lx	0.58	0.45	CG2

Utilisation profile: DIALux presetting (5.1.4-Standard (outdoor transportation area))

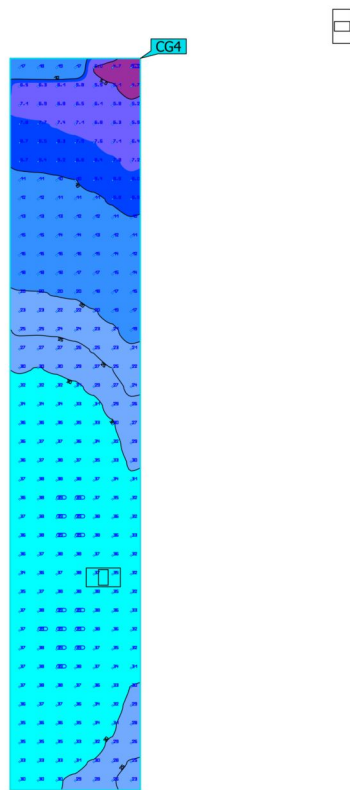
Site 1 (Light scene 1) Light Spill Calc



Properties	\bar{E}	E_{min}	E_{max}	$U_0 (g_1)$	g_2	Index
Light Spill Calc Perpendicular illuminance Height: 0.000 m	3.84 lx	0.002 lx	84.7 lx	0.001	0.000	CG3

Utilisation profile: DIALux presetting (5.1.4-Standard (outdoor transportation area))

Site 1 (Light scene 1)
Walkway

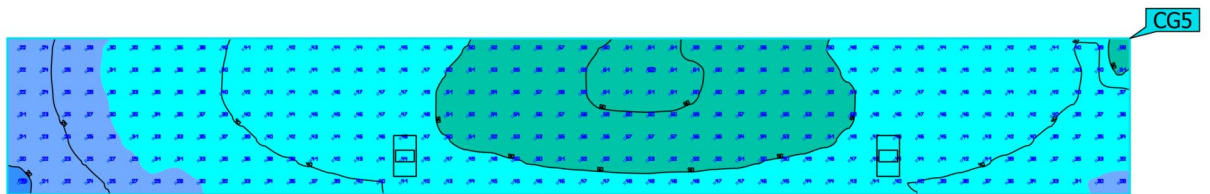


Properties	\bar{E}	E_{min}	E_{max}	$U_0 (g_1)$	g_2	Index
Walkway Perpendicular illuminance Height: 0.000 m	25.6 lx	4.23 lx	39.4 lx	0.17	0.11	CG4

Utilisation profile: DIALux presetting (5.1.4-Standard (outdoor transportation area))

Site 1 (Light scene 1)

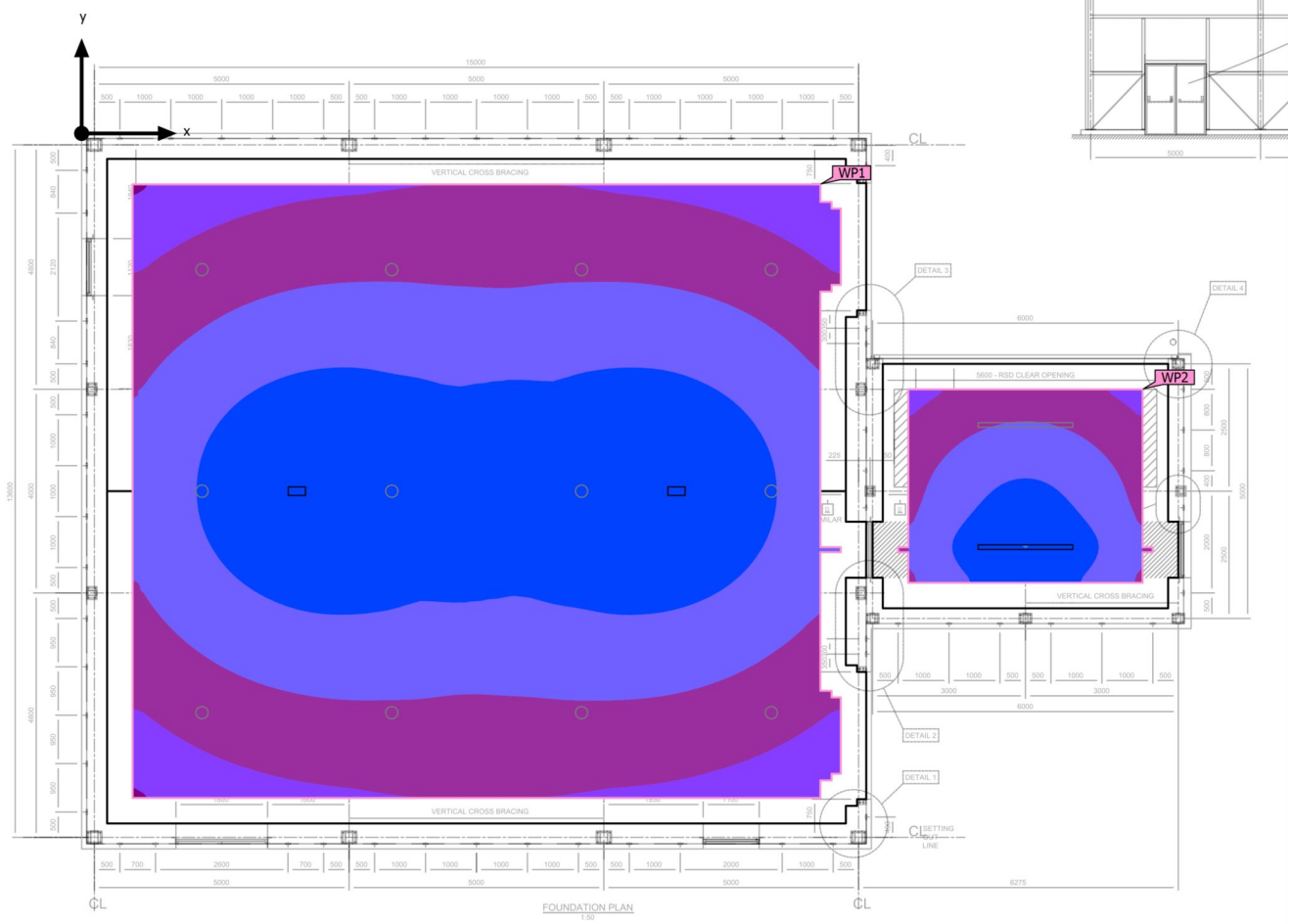
Walkway



Properties	\bar{E}	E_{min}	E_{max}	$U_0 (g_1)$	g_2	Index
Walkway Perpendicular illuminance Height: 0.000 m	44.0 lx	19.2 lx	62.1 lx	0.44	0.31	CG5

Utilisation profile: DIALux presetting (5.1.4-Standard (outdoor transportation area))

Building 1 · Storey 1 (Emergency light scene) Calculation objects



Building 1 · Storey 1 (Emergency light scene)

Calculation objects

Anti panic surfaces

Properties	E_{min}	E_{max}	U_d	Index
Anti panic surface (Workshop) Perpendicular illuminance (adaptive) Height: 0.000 m	1.95 lx	9.77 lx	0.20	AP1

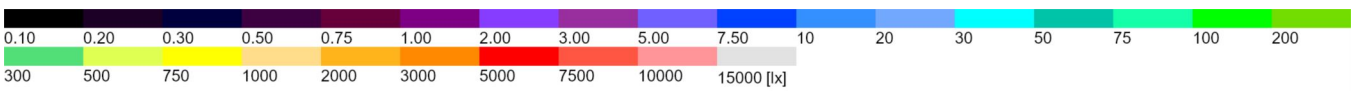
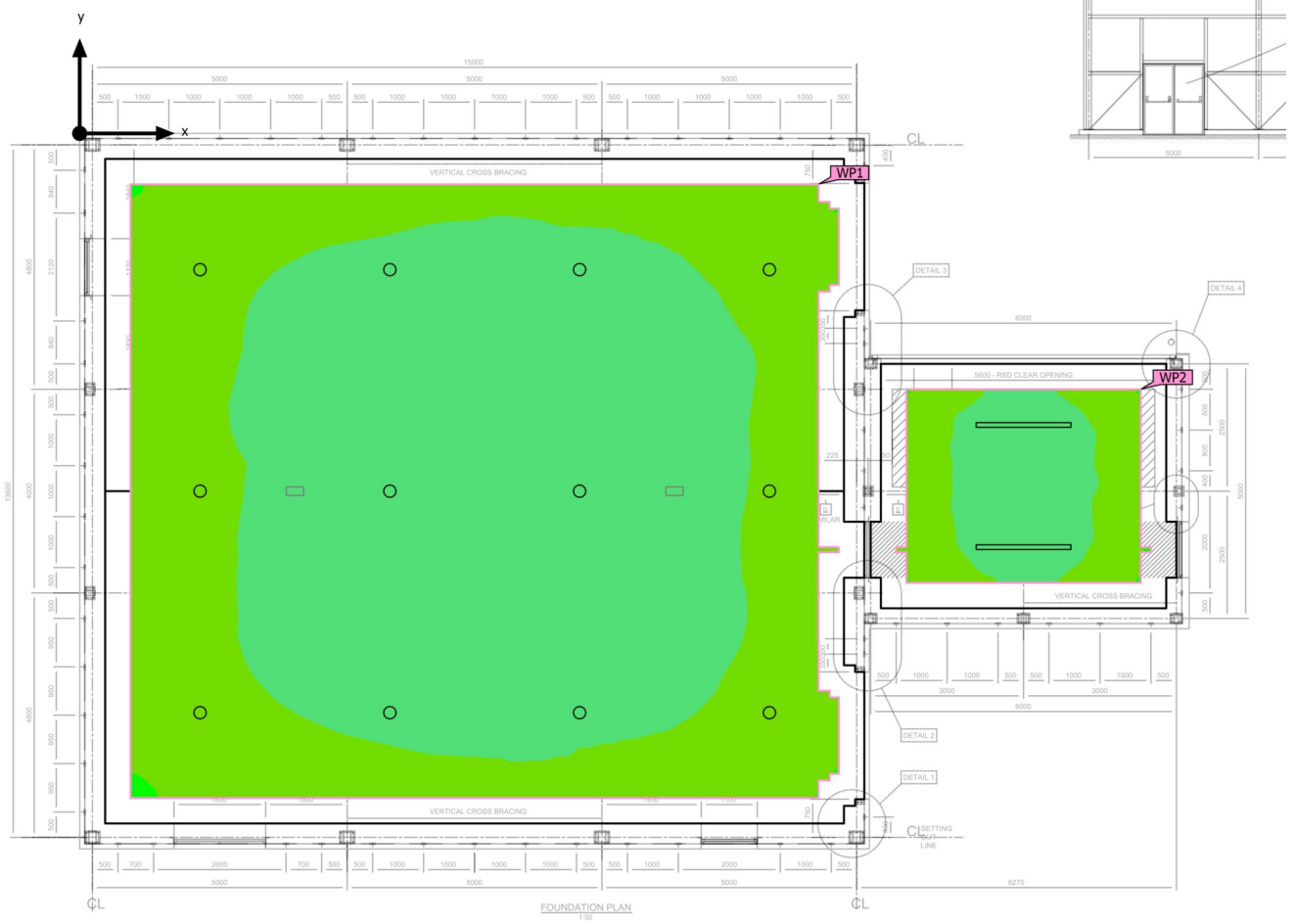
Escape routes

Properties	E_{min} Middle area	E_{max} Middle area	E_{min} Centerline	E_{max} Centerline	U_d	Index
Emergency route 1 Perpendicular illuminance (adaptive) Height: 0.000 m	3.49 lx	9.96 lx	3.64 lx	9.93 lx	0.37	ER1

Notes on planning:

The emergency lighting scene was calculated without reflection and without taking into account the placed furniture.

Building 1 · Storey 1 (Light scene 1)
Calculation objects



Building 1 · Storey 1 (Light scene 1)

Calculation objects

Working planes

Properties	\bar{E}	E_{min}	E_{max}	$U_o (g_1)$	g_2	Index
Working plane (Workshop) Perpendicular illuminance (adaptive) Height: 0.000 m, Wall zone: 0.500 m	305 lx	191 lx	358 lx	0.63	0.53	WP1
Working plane (Skips) Perpendicular illuminance (adaptive) Height: 0.000 m, Wall zone: 0.500 m	302 lx	209 lx	364 lx	0.69	0.57	WP2